

OLSBA NEW WATER SERVICE CONNECTION PLAN

OLD LYME, CONNECTICUT

APRIL 2021

REVISED :

SHEET INDEX

SHEET No.	SHEET TITLE
GI-101	COVER SHEET
GI-102	GENERAL NOTES
GI-103	WELL AND WATER SOURCE INFORMATION
GI-104	SHEET INDEX PLAN
CW-101	LAYOUT PLAN
CW-102	LAYOUT PLAN
CW-103	LAYOUT PLAN
CD-101	STANDARD DETAILS
CD-102	STANDARD DETAILS

PREPARED FOR

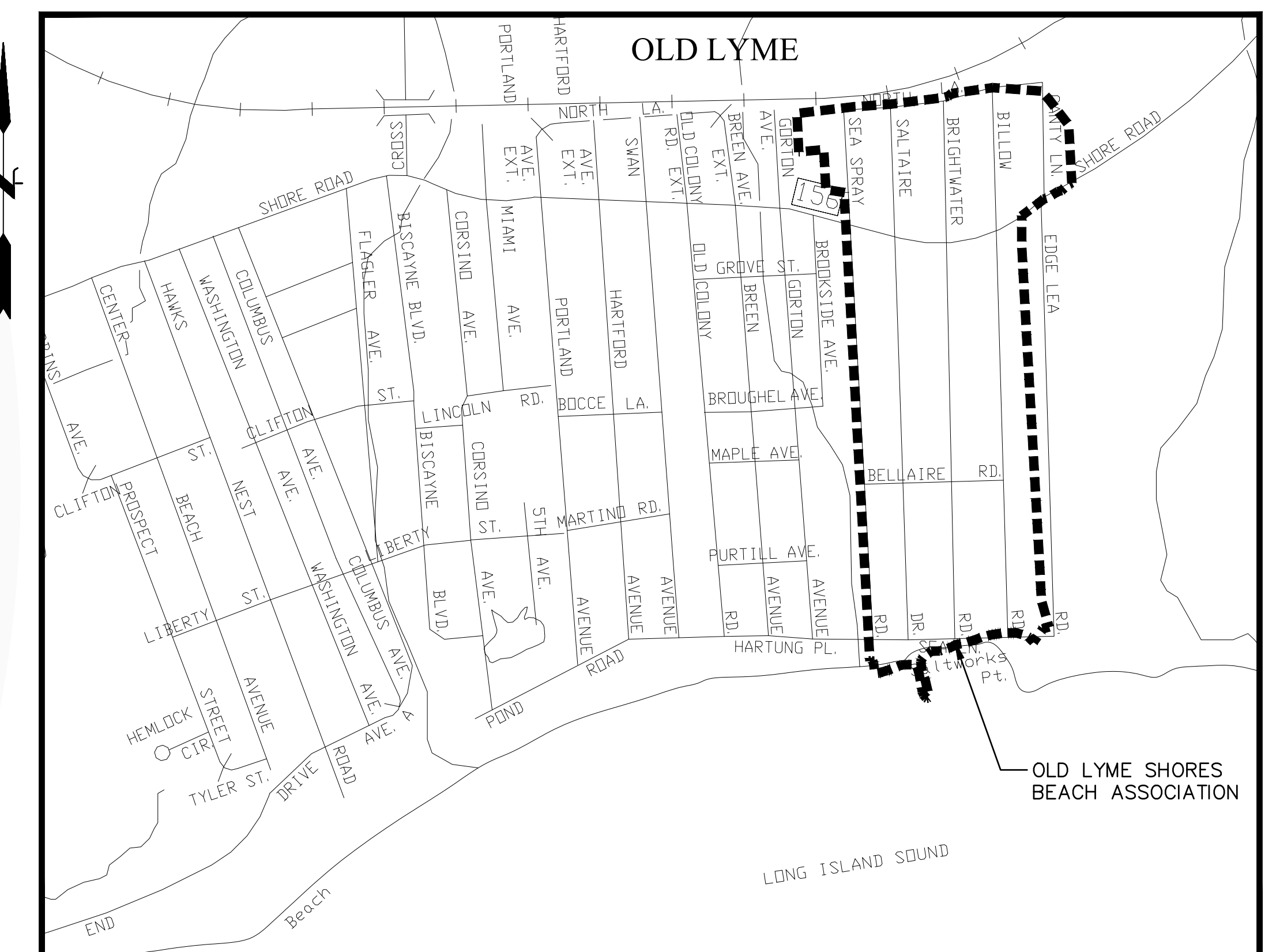
OLD LYME SHORES BEACH ASSOCIATION

PREPARED BY



FUSS & O'NEILL

146 HARTFORD ROAD
MANCHESTER, CONNECTICUT 06040
860.646.2469
www.fando.com



LOCATION MAP

SCALE: 1" = 500'

NOT FOR CONSTRUCTION

PROJ. No.: 20101210.B10
DATE: APRIL 2021

GI-101

CIVIL GENERAL NOTES

GENERAL

- SYMBOLS AND LEGENDS OF PROJECT FEATURES ARE GRAPHIC REPRESENTATIONS AND ARE NOT NECESSARILY SHOWN ON THE DRAWINGS TO SCALE OR TO THEIR ACTUAL DIMENSION OR LOCATION. COORDINATE DETAIL SHEET DIMENSIONS, MANUFACTURERS' LITERATURE, SHOP DRAWINGS AND FIELD MEASUREMENTS OF SUPPLIED PRODUCTS FOR LAYOUT OF THE PROJECT FEATURES.
- DO NOT RELY SOLELY ON ELECTRONIC VERSIONS OF DRAWINGS, SPECIFICATIONS, AND DATA FILES THAT ARE PROVIDED BY THE ENGINEER. FIELD VERIFY LOCATION OF PROJECT FEATURES.
- PERFORM NECESSARY CONSTRUCTION NOTIFICATIONS, APPLY FOR AND OBTAIN NECESSARY PERMITS, PAY FEES, AND POST BONDS ASSOCIATED WITH THE WORK AS REQUIRED BY THE CONTRACT DOCUMENTS.
- BASE PLAN: THE PROPERTY LINES SHOWN WERE DETERMINED BY GIS, AND FROM PLANS OF RECORD. THE TOPOGRAPHY AND PHYSICAL FEATURES ARE BASED ON AN ACTUAL FIELD SURVEY PERFORMED ON THE GROUND BY FUSS & O'NEILL IN 2013 AND 2019 AND AERIAL SERVICES PERFORMED BY EASTERN TOPOGRAPHICS DURING FALL 2012, ADDITIONAL AERIAL SURVEY WAS PERFORMED IN SPRING 2019 BY ROBINSON AERIAL. THIS AERIAL MAPPING EXTENDED EASTWARD ALONG THE PROPOSED SEWER FORCE MAIN ROUTE WITHIN THE CONNECTICUT ROUTE 156 RIGHT OF WAY AND AUGMENTED THE EXISTING 1990 AERIAL MAPPING.
- TOPOGRAPHIC ELEVATIONS ARE BASED ON NAD88 DATUM.
- GEOTECHNICAL DATA INCLUDING TEST PIT AND BORING LOCATIONS AND ELEVATIONS WERE OBTAINED FROM AQUIFER DRILLING AND TESTING IN 2013. IN 2019 CONFIRMATORY BORINGS LOCATIONS AND ELEVATIONS WERE OBTAINED FROM CLARENCE WELTI ASSOCIATES INC.
- WETLANDS WERE DELINEATED BY FUSS AND O'NEILL INC. ON JULY 1, 2019.

WORK RESTRICTIONS

- DO NOT CLOSE OR OBSTRUCT ROADWAYS, SIDEWALKS, FIRE HYDRANTS, AND UTILITIES WITHOUT APPROPRIATE PERMITS.
- WORK IS RESTRICTED TO THE HOURS OF TO THE HOURS 8:00 AM TO 4:00 PM ON MONDAY THROUGH FRIDAY

REGULATORY REQUIREMENTS

- WITHIN LOCAL RIGHTS-OF-WAY, PERFORM THE WORK IN ACCORDANCE WITH LOCAL STANDARDS.
- WITHIN STATE RIGHTS-OF-WAY, PERFORM THE WORK IN ACCORDANCE WITH THE LATEST EDITION OF THE DEPARTMENT OF TRANSPORTATION'S STANDARD SPECIFICATIONS AND ISSUED REVISIONS/SUPPLEMENTS.
- PROVIDE TRAFFIC SIGNAGE AND PAVEMENT MARKINGS IN CONFORMANCE WITH THE LATEST EDITION OF THE MANUAL OF UNIFORM TRAFFIC CONTROL DEVICES.
- BE RESPONSIBLE FOR SITE SECURITY AND JOB SAFETY. PERFORM CONSTRUCTION ACTIVITIES IN ACCORDANCE WITH OSHA STANDARDS AND LOCAL REQUIREMENTS.
- DISPOSE OF DEMOLITION DEBRIS IN ACCORDANCE WITH APPLICABLE FEDERAL, STATE AND LOCAL REGULATIONS, ORDINANCES AND STATUTES.
- THIS PROJECT DISTURBS MORE THAN ONE ACRE OF LAND AND FALLS WITHIN THE CONNECTICUT DEEP STORMWATER AND DEWATERING WASTEWATER FROM CONSTRUCTION ACTIVITIES GENERAL PERMIT PROCESS. (OLD LYME SHORES BEACH ASSOCIATION) HAS SUBMITTED INFORMATION TO THE DEEP TO SATISFY THIS GENERAL PERMIT. THE CONTRACTOR MUST HAVE A COPY OF THIS GENERAL PERMIT ON SITE AT ALL TIMES.

EROSION AND SEDIMENT CONTROL

- INSTALL EROSION CONTROL MEASURES PRIOR TO STARTING ANY WORK ON THE SITE. REFER TO THE EROSION AND SEDIMENT CONTROL DRAWINGS.
- IMPLEMENT ALL NECESSARY MEASURES REQUIRED TO CONTROL STORMWATER RUNOFF, DUST, SEDIMENT, AND DEBRIS FROM EXITING THE SITE. PERFORM CORRECTIVE ACTION AS NEEDED FOR EROSION CLEANUP AND REPAIRS TO OFF SITE AREAS, IF ANY, AT NO COST TO OWNER.
- INSPECT AND MAINTAIN EROSION CONTROL MEASURES PER THE SCHEDULE IN THE EROSION AND SEDIMENT CONTROL DRAWINGS. DISPOSE OF SEDIMENT IN AN UPLAND AREA. DO NOT ENCUMBER OTHER DRAINAGE STRUCTURES AND PROTECTED AREAS.
- PERFORM CONSTRUCTION SEQUENCING IN SUCH A MANNER TO CONTROL EROSION AND TO MINIMIZE THE TIME THAT EARTH MATERIALS ARE EXPOSED BEFORE THEY ARE COVERED, SEEDED, OR OTHERWISE STABILIZED.
- UPON COMPLETION OF CONSTRUCTION AND ESTABLISHMENT OF PERMANENT GROUND COVER, REMOVE AND DISPOSE OF TEMPORARY EROSION CONTROL MEASURES. CLEAN SEDIMENT AND DEBRIS FROM TEMPORARY MEASURES AND FROM PERMANENT STORM DRAIN AND SANITARY SEWER SYSTEMS.

DEMOLITION

- REMOVE AND DISPOSE OF EXISTING UTILITIES, FOUNDATIONS AND UNSUITABLE MATERIAL BENEATH AND FOR A DISTANCE OF 10 FEET BEYOND THE PROPOSED BUILDING FOOTPRINT INCLUDING EXTERIOR COLUMNS, UNLESS OTHERWISE NOTED.

UNDERGROUND UTILITY NOTE

THE UNDERGROUND UTILITIES DEPICTED HEREON ARE BASED ON FIELD LOCATION OF VISIBLE FEATURES, MAPS AND PLANS OF RECORD, UTILITY MAPPING OR OTHER SOURCES OF INFORMATION. THE ENGINEER MAKES NO GUARANTEE THAT THE UNDERGROUND UTILITIES SHOWN COMPRISE ALL SUCH UTILITIES IN THE AREA, EITHER IN SERVICE OR ABANDONED. THE ENGINEER FURTHER DOES NOT WARRANT THAT THE UNDERGROUND UTILITIES SHOWN ARE IN THE EXACT LOCATION INDICATED ALTHOUGH HE DOES DECLARE THAT THEY ARE DEPICTED AS ACCURATELY AS POSSIBLE FROM INFORMATION AVAILABLE. THE ENGINEER HAS NOT PHYSICALLY LOCATED THE UNDERGROUND UTILITIES.

CONSTRUCTION LAYOUT

- PROVIDE PROPER TRANSITIONS BETWEEN EXISTING AND PROPOSED SITE IMPROVEMENTS. FIELD VERIFY EXISTING PAVEMENT AND GROUND ELEVATIONS AT THE INTERFACE WITH PROPOSED PAVEMENTS AND DRAINAGE STRUCTURES BEFORE THE START OF CONSTRUCTION.
- PRIOR TO ORDERING MATERIALS AND BEGINNING CONSTRUCTION, FIELD VERIFY PROPOSED UTILITY ROUTES AND IDENTIFY ANY INTERFERENCES OR OBSTRUCTIONS WITH EXISTING UTILITIES OR PUBLIC RIGHTS-OF-WAY.
- IMMEDIATELY INFORM THE ENGINEER IN WRITING IF EXISTING UTILITY CONDITIONS CONFLICT OR DIFFER FROM THAT INDICATED AND IF THE WORK CANNOT BE COMPLETED AS INDICATED.
- DIMENSIONS ARE FROM FACE OF CURB, FACE OF BUILDING, FACE OF WALL, AND CENTER LINE OF PAVEMENT MARKINGS, UNLESS NOTED OTHERWISE.
- BOUNDS OR MONUMENTATION DISTURBED DURING CONSTRUCTION SHALL BE SET OR RESET BY A PROFESSIONAL LICENSED SURVEYOR.

EARTHWORK

- NOTIFY UTILITY LOCATOR SERVICE AT LEAST 72 HOURS BEFORE STARTING EXCAVATION. "CALL BEFORE YOU DIG" AT 1-800-922-4455.
- STOP WORK IN THE VICINITY OF SUSPECTED CONTAMINATED SOIL, GROUNDWATER OR OTHER MEDIA. IMMEDIATELY NOTIFY THE OWNER SO THAT APPROPRIATE TESTING AND SUBSEQUENT ACTION CAN BE TAKEN. RESUME WORK IN THE IMMEDIATE VICINITY ONLY UPON DIRECTION BY THE OWNER.
- WITHIN THE LIMITS OF THE BUILDING FOOTPRINT, PERFORM EARTHWORK OPERATIONS TO SUBGRADE ELEVATIONS. SEE DRAWINGS BY OTHERS FOR WORK ABOVE SUBGRADE.

UTILITIES

- TERMINATE EXISTING UTILITIES IN CONFORMANCE WITH LOCAL, STATE AND INDIVIDUAL UTILITY COMPANY STANDARD SPECIFICATIONS AND DETAILS. COORDINATE UTILITY SERVICE DISCONNECTS WITH UTILITY REPRESENTATIVES.
- THE TYPE, SIZE AND LOCATION OF DEPICTED UNDERGROUND UTILITIES ARE APPROXIMATE REPRESENTATIONS OF INFORMATION OBTAINED FROM FIELD LOCATIONS OF VISIBLE FEATURES, EXISTING MAPS AND PLANS OF RECORD, UTILITY MAPPING, AND OTHER SOURCES OF INFORMATION OBTAINED BY THE ENGINEER. ASSUME NO GUARANTEE AS TO THE COMPLETENESS, SERVICEABILITY, EXISTENCE, OR ACCURACY OF UNDERGROUND FACILITIES. FIELD VERIFY THE EXACT LOCATIONS, SIZES, AND ELEVATIONS OF THE POINTS OF CONNECTIONS TO EXISTING UTILITIES.
- PAY ALL FEES AND COSTS ASSOCIATED WITH UTILITY MODIFICATIONS AND CONNECTIONS, REGARDLESS OF THE ENTITY THAT PERFORMS THE WORK.
- COORDINATE THE WORK AND WORK SCHEDULE WITH UTILITY COMPANIES. PROVIDE ADEQUATE NOTICE TO UTILITIES TO PREVENT DELAYS IN CONSTRUCTION.
- INTERIOR DIAMETERS OF STORM DRAIN AND SANITARY SEWER STRUCTURES SHALL BE DETERMINED BY THE PRECAST MANUFACTURER, BASED ON THE INDICATED PIPE SYSTEM LAYOUT AND LOCAL MUNICIPAL STANDARDS.

MINIMUM INTERIOR DIAMETERS:
0 TO 20 FEET DEEP; 4 FEET.
20 FEET OR GREATER; 5 FEET.

- RIM ELEVATIONS FOR MANHOLES, VALVE COVERS, GATE AND PULL BOXES, AND OTHER STRUCTURES ARE APPROXIMATE. SET OR RESET RIM ELEVATIONS AS FOLLOWS:

IN PAVEMENTS AND CONCRETE SURFACES: FLUSH
IN SURFACES ALONG ACCESSIBLE ROUTES: FLUSH
IN LANDSCAPED, SEEDED, AND OTHER EARTH SURFACE AREAS:
1 INCH ABOVE SURROUNDING AREA; TAPER EARTH TO RIM ELEVATION.

- INSTALL PROPOSED PRIVATE UTILITY SERVICES ACCORDING TO THE REQUIREMENTS PROVIDED BY, AND APPROVED BY THE AUTHORITY HAVING JURISDICTION (WATER, SEWER, GAS, TELEPHONE, ELECTRIC, FIRE ALARM, ETC.). COORDINATE FINAL DESIGN LOADS AND LOCATIONS WITH OWNER AND ARCHITECT.

PAVEMENT

- AT A MINIMUM, CONSTRUCT ACCESSIBLE ROUTES, PARKING SPACES, RAMPS, SIDEWALKS AND WALKWAYS IN CONFORMANCE WITH THE FEDERAL AMERICANS WITH DISABILITIES ACT AND WITH STATE AND LOCAL LAWS AND REGULATIONS (WHICHEVER ARE MORE STRINGENT).

SITE RESTORATION

- PROVIDE 6 INCHES OF TOPSOIL AND SEED TO AREAS DISTURBED DURING CONSTRUCTION AND NOT DESIGNATED TO BE RESTORED WITH IMPERVIOUS SURFACES (BUILDINGS, PAVEMENTS, WALKS, ETC.) UNLESS OTHERWISE NOTED.
- REPAIR DAMAGES RESULTING FROM CONSTRUCTION LOADS, AT NO ADDITIONAL COST TO OWNER.
- RESTORE AREAS DISTURBED BY CONSTRUCTION OPERATIONS TO THEIR ORIGINAL CONDITION OR BETTER, AT NO ADDITIONAL COST TO OWNER.

ABBREVIATIONS

CB	CATCH BASIN	PVC	POLYVINYL CHLORIDE
CO	CLEANOUT	RC	REINFORCED CONCRETE
DBL CB	DOUBLE CATCH BASIN	SCS	SEDIMENTATION CONTROL SYSTEM
D.I.	DUCTILE IRON	RCP	REINFORCED CONCRETE PIPE
Ø, DIA.	DIAMETER	RGS	RIGID GALVANIZED STEEL
DMH	DRAINAGE MANHOLE	SCH.	SCHEDULE
E.C.L.	EROSION CONTROL LINING	SMH	SANITARY MANHOLE
ECO	END CLEANOUT	STA.	STATION
EL.	ELEVATION	DSMH	DROP SANITARY MANHOLE
EOB.	END OF BORING	TF	TOP OF FRAME
EXIST.	EXISTING	TYP.	TYPICAL
EXP.	EXPANSION	VCP	VITRIFIED CLAY PIPE
FRP	FIBERGLASS REINFORCED POLYETHYLENE	W/	WITH
G.W.O	GROUNDWATER OBSERVED		
HDPE	HIGH DENSITY POLYETHYLENE		
I.D.	INSIDE DIAMETER		
INV.	INVERT		

LEGEND

	SANITARY MANHOLE		CONTROL POINT		EXISTING UTILITY POLE		SIGN
	STORM MANHOLE		WATER VALVE		STORM MANHOLE		GAS GATE
	ELECTRIC MANHOLE		FIRE HYDRANT		MANHOLE MISC.		POST
	TELEPHONE MANHOLE		UTILITY POLE		TELEPHONE MANHOLE		DECIDUOUS TREE
	CATCH BASIN		GUY WIRE		SANITARY MANHOLE		PINE TREE
	FLAT TOP CATCHBASIN		BOLLARD		CATCH BASIN		TREE
	DOUBLE CATCHBASIN		SIGN		FLAT TOP CATCHBASIN		SHRUB
	FLARED END		GAS GATE		ROCK		STREET LIGHT
	EXISTING IRON PIPE		WELL		B.C.L.C.		IRRIGATION HEAD
	EXISTING IRON ROD OR I.P.I.N.		BUSH		G.S.C.		BITUMINOUS CONCRETE LIP CURB
	EXISTING DRILL HOLE		DECIDUOUS TREE		W		GRANITE STONE CURB
	EXISTING MONUMENT		PINE TREE		E		WATER LINE COMMUNICATION LINE
	IRON PIN TO BE SET		PEDESTRIAN WALK SIGNAL		T		ELECTRICITY LINE
	MONUMENT TO BE SET		FLOOD LIGHT		LIGHT		TELEPHONE LINE
	MAIL BOX		WETLANDS FLAG		PROPERTY LINE		HIGHWAY LINE
	SILT SACK		STONE CHECK DAM		EASEMENT LINE		BUTTRESSED CURB
	TEST PIT		SEWER LATERAL CAP		GRANITE CURB		TREELINE
	SPEED TABLE		ABANDONED WELL		STONE WALL		WETLANDS
	A.E. FIRM LINE		TEST PIT		TIDAL WETLANDS		EXISTING CONTOUR
	V.E. FIRM LINE		TEST BORING		INDEX CONTOUR		FENCE
			TEST PROBE		GUIDE RAIL		WETLANDS REGULATED AREA
			PROBE GROUNDWATER ELEV.		C900 PVC SEWER PIPE		S.D.R.35 PVC SEWER PIPE
			END OF PROBE		PROPOSED SILT FENCE		PROPOSED SEWER FORCE MAIN OLD LYME SHORES ASSOCIATIONS
					PROPOSED C900 PVC SEWER PIPE WITHIN 75FT WELL RADIUS		PROPOSED C900 DOUBLE WALL FUSIBLE ENCASED WITHIN 25FT WELL RADIUS
					PROPOSED C900 PVC SERVICE CONNECTION WITHIN 75FT WELL RADIUS		

GENERAL NOTES:

CONTRACTOR IS RESPONSIBLE FOR OBTAINING ALL NECESSARY LOCAL AND STATE APPROVALS AND/OR CONSTRUCTION PERMITS PRIOR TO THE BEGINNING ANY SITE IMPROVEMENTS/CONSTRUCTION.

THE CONTRACTOR SHALL CONFORM TO ALL REQUIREMENTS OF THE LOCAL AND STATE AGENCIES.

THE LOCATION OF ALL UTILITIES SHOWN HEREON IS BASED ON THE BEST AVAILABLE DATA. THE LOCATIONS ARE APPROXIMATE AND ALL UTILITIES MAY NOT BE SHOWN. PRIOR TO BEGINNING ANY CONSTRUCTION, THE CONTRACTOR WILL BE RESPONSIBLE TO NOTIFY "CALL BEFORE YOU DIG" AT 1-800-922-4455 AND HAVE ALL UTILITIES MARKED ON THE GROUND.

SITE TO BE GRADED SMOOTHLY AND EVENLY IN ACCORDANCE WITH THE CONTOURS AND SPOT GRADE ELEVATIONS. CONTRACTOR IS RESPONSIBLE FOR INSURING A POSITIVE DRAINAGE FLOW TO ALL CATCH BASINS WITHOUT CREATING ANY FLAT SPOTS THAT WILL RESULT IN STANDING WATER.

THE CONTRACTOR MUST VERIFY EXISTING UTILITY ELEVATIONS PRIOR TO THE INSTALLATION OF THE SYSTEM. CONTRACTOR TO PERFORM TEST PITS, SUBSURFACE INVESTIGATION TECHNIQUES AND OTHER MEASURES AS REQUIRED TO ACCURATELY LOCATE EXISTING UNDERGROUND UTILITIES AND TO CONFIRM NEW WORK IS NOT IN CONFLICT WITH EXISTING INFRASTRUCTURE. ANY SIGNIFICANT DIFFERENCE IN THE OUTLET ELEVATION MUST BE REPORTED TO THE SITE ENGINEER PRIOR TO INSTALLATION. CONFIRM THAT CROSSING UTILITIES DO NOT CONFLICT.

AN APPROVED EROSION CONTROL BOND IS REQUIRED BEFORE THE START OF ANY CONSTRUCTION.

STATIONING IS ALONG THE CENTERLINE OF THE ROAD. ACTUAL PIPE LENGTHS MAY VARY.

PROBES ELEVATIONS IN PROFILE BASED ON APPROXIMATE ACTUAL LOCATIONS WHICH MAY VARY FROM ALIGNMENT ELEVATIONS.

NOT FOR CONSTRUCTION

File Path: J:\DWG\20101210B10_OLSBA Design\Civil\Plan\20101210B10_WTR01_CWC_COV.dwg Layout: G1-102 Plotted: Fri, April 02, 2021 - 10:50 AM User: sleamy MS VIEW: Plotter: AUTOCAD PDF (GENERAL DOCUMENTATION) PC3 CTB File: FO.STB LAYER STATE:

No.	DATE	DESCRIPTION	SAL	MEG
1.				

SEAL	SEAL		

SCALE:
HORIZ.: NTS
VERT.: NTS

DATUM:
HORIZ.:
VERT.:

GRAPHIC SCALE

FUSS & O'NEILL
146 HARTFORD ROAD
MANCHESTER, CONNECTICUT 06040
860.646.2469
www.fando.com

OLSBA NEW WATER SERVICE CONNECTION PLAN

GENERAL NOTES

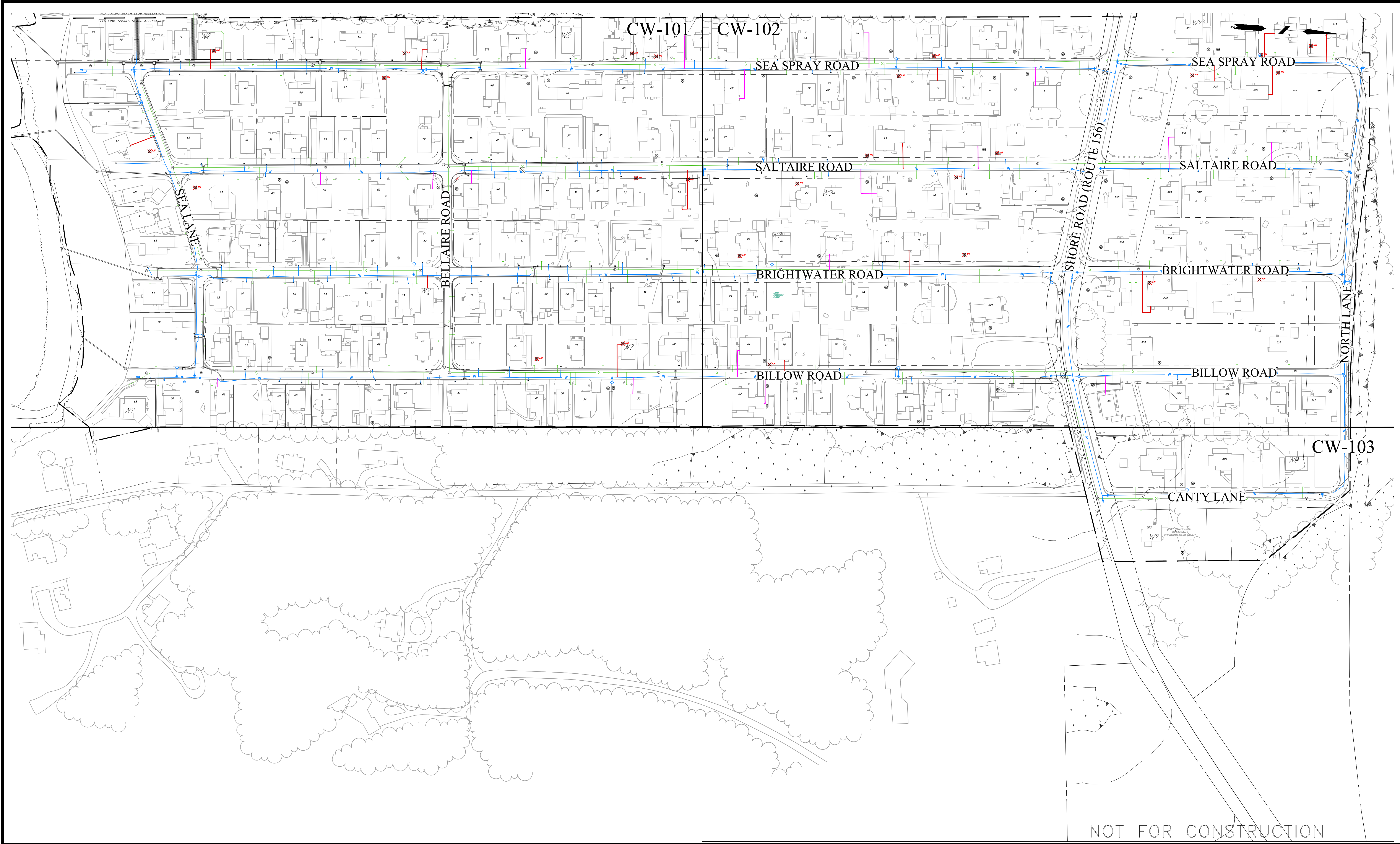
OLD LYME SHORES BEACH ASSOCIATION

OLD LYME CONNECTICUT

PROJ. No.: 20101210.B10
DATE: APRIL 2021

GI-102

File Path: J:\DWG\20101210B10_OLSBA Design\Civil\Plan\20101210B10_WTR01_CWC_STP.dwg Layout: GI-104 INDEX Plotted: Fri, April 02, 2021 - 10:52 AM User: slemmy
 MS VIEW: PLOTTER: AUTOCAD PDF (GENERAL DOCUMENTATION) PC3 CTB File: FO.STB



No.	DATE	DESCRIPTION	DESIGNER	REVIEWER

<p>LEGEND</p> <p>⊙ PROPOSED SEWER MANHOLE</p> <p>— PROPOSED SEWER LINE</p> <p>- - - PROPOSED SEWER LATERAL</p> <p>— EXISTING WATER MAIN</p> <p>—• EXISTING WATER SERVICE</p>	<p>LEGEND</p> <p>— NEW WATER SERVICE / ABANDON WELL</p> <p>— NEW WATER SERVICE / KEEP WELL</p> <p>⊙ EXISTING WELL</p> <p>⊗ AW EXISTING WELL TO BE ABANDON</p>
---	--

SCALE:
 HORZ.: 1"=80'
 VERT.: NTS

DATUM:
 HORZ.:
 VERT.:

80' 40' 0 80'
 GRAPHIC SCALE

f **FUSS & O'NEILL**
 146 HARTFORD ROAD
 MANCHESTER, CONNECTICUT 06040
 860.646.2469
 www.fando.com

OLSBA NEW WATER SERVICE CONNECTION PLAN

SHEET INDEX PLAN

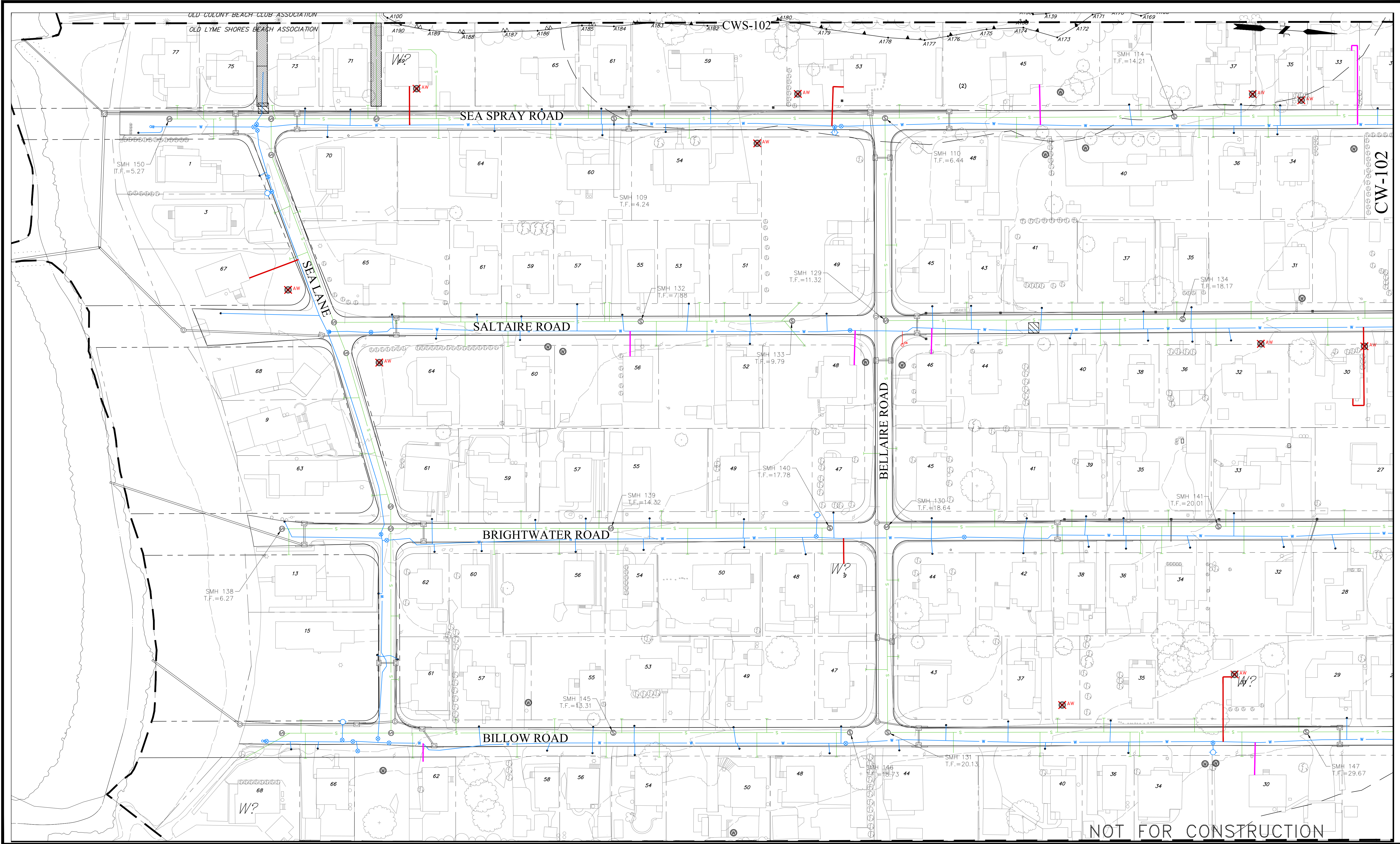
OLD LYME SHORES BEACH ASSOCIATION

OLD LYME CONNECTICUT

PROJ. No.: 20101210.B10
 DATE: APRIL 2021

GI-104

File Path: J:\DWG\20101210\B10_OLSBA Design\Civil\Plan\20101210\B10_WTR01_CWC_STP.dwg Layout: CW-101 Plotted: Fri, April 02, 2021 - 10:52 AM User: slemmy
 PLOTTER: AUTOCAD PDF (GENERAL DOCUMENTATION) PC3 CTB File: FO.STB
 LAYER STATE:



No.	DATE	DESCRIPTION	DESIGNER	REVIEWER
1.				

LEGEND		LEGEND	
	PROPOSED SEWER MANHOLE		NEW WATER SERVICE / ABANDON WELL
	PROPOSED SEWER LINE		NEW WATER SERVICE / KEEP WELL
	PROPOSED SEWER LATERAL		EXISTING WELL
	EXISTING WATER MAIN		EXISTING WELL TO BE ABANDON
	EXISTING WATER SERVICE		

SCALE:
 HORZ.: 1"=40'
 VERT.: NTS

DATUM:
 HORZ.: NAD83
 VERT.: NAVD88

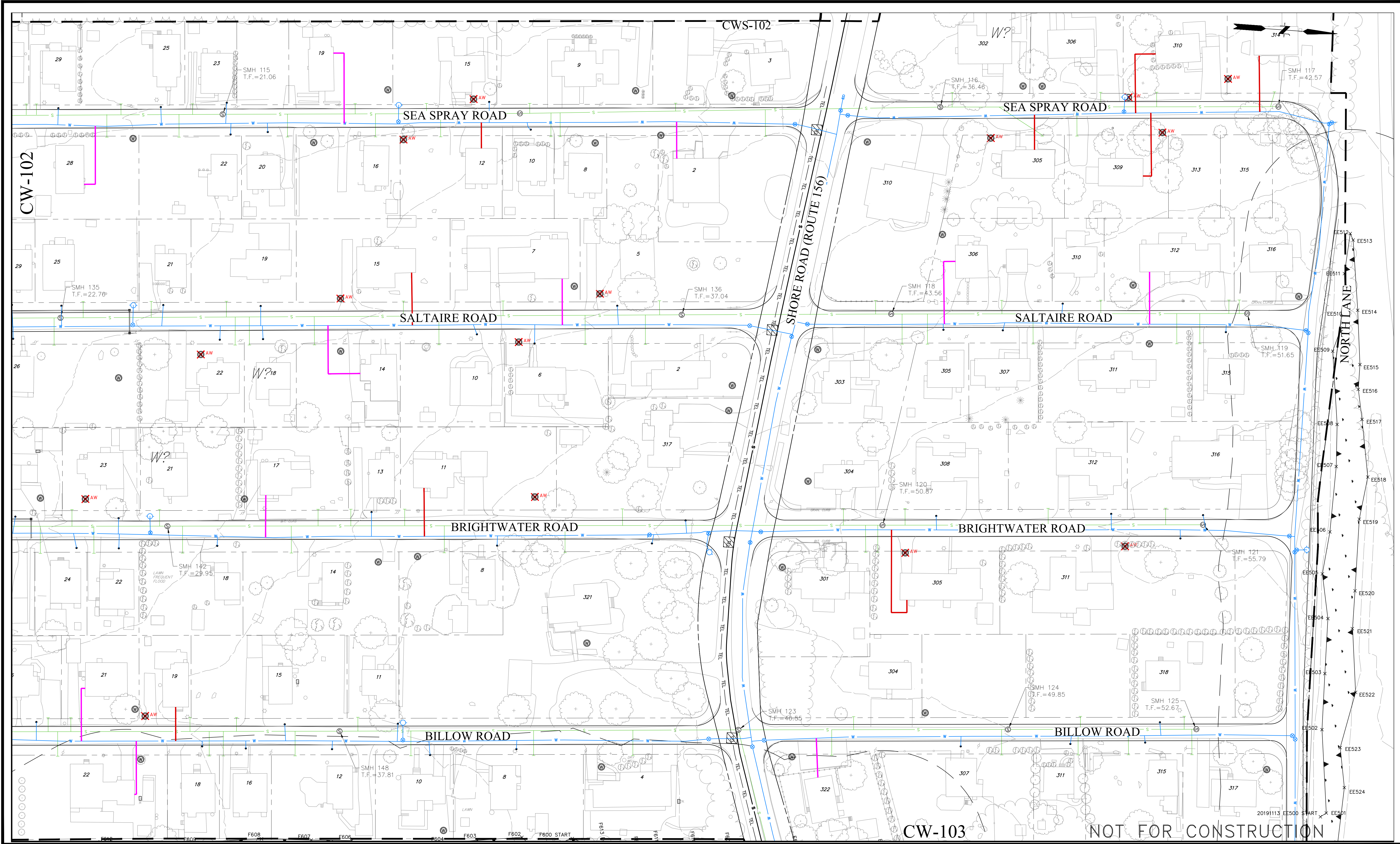
GRAPHIC SCALE

FUSS & O'NEILL
 146 HARTFORD ROAD
 MANCHESTER, CONNECTICUT 06040
 860.646.2469
 www.fando.com

OLSBA NEW WATER SERVICE CONNECTION PLAN
 LAYOUT PLAN
 OLD LYME SHORES BEACH ASSOCIATION
 OLD LYME CONNECTICUT

PROJ. No.: 20101210.B10
 DATE: APRIL 2021
CW-101

File Path: J:\DWG\20101210\B10_OLSBA Design\Civil\Plan\20101210\B10_WTR01_CWC_STP.dwg Layout: CW-102 Plotted: Fri, April 02, 2021 - 10:52 AM User: sleamy
 MS VIEW: Plotter: AUTOCAD PDF (GENERAL DOCUMENTATION) PC3 CTB File: FO.STB



No.	DATE	DESCRIPTION	DESIGNER	REVIEWER
1.				

LEGEND		LEGEND	
	PROPOSED SEWER MANHOLE		NEW WATER SERVICE / ABANDON WELL
	PROPOSED SEWER LINE		NEW WATER SERVICE / KEEP WELL
	PROPOSED SEWER LATERAL		EXISTING WELL
	EXISTING WATER MAIN		EXISTING WELL TO BE ABANDON
	EXISTING WATER SERVICE		

SCALE:
 HORZ.: 1"=40'
 VERT.: NTS

DATUM:
 HORZ.: NAD83
 VERT.: NAVD88

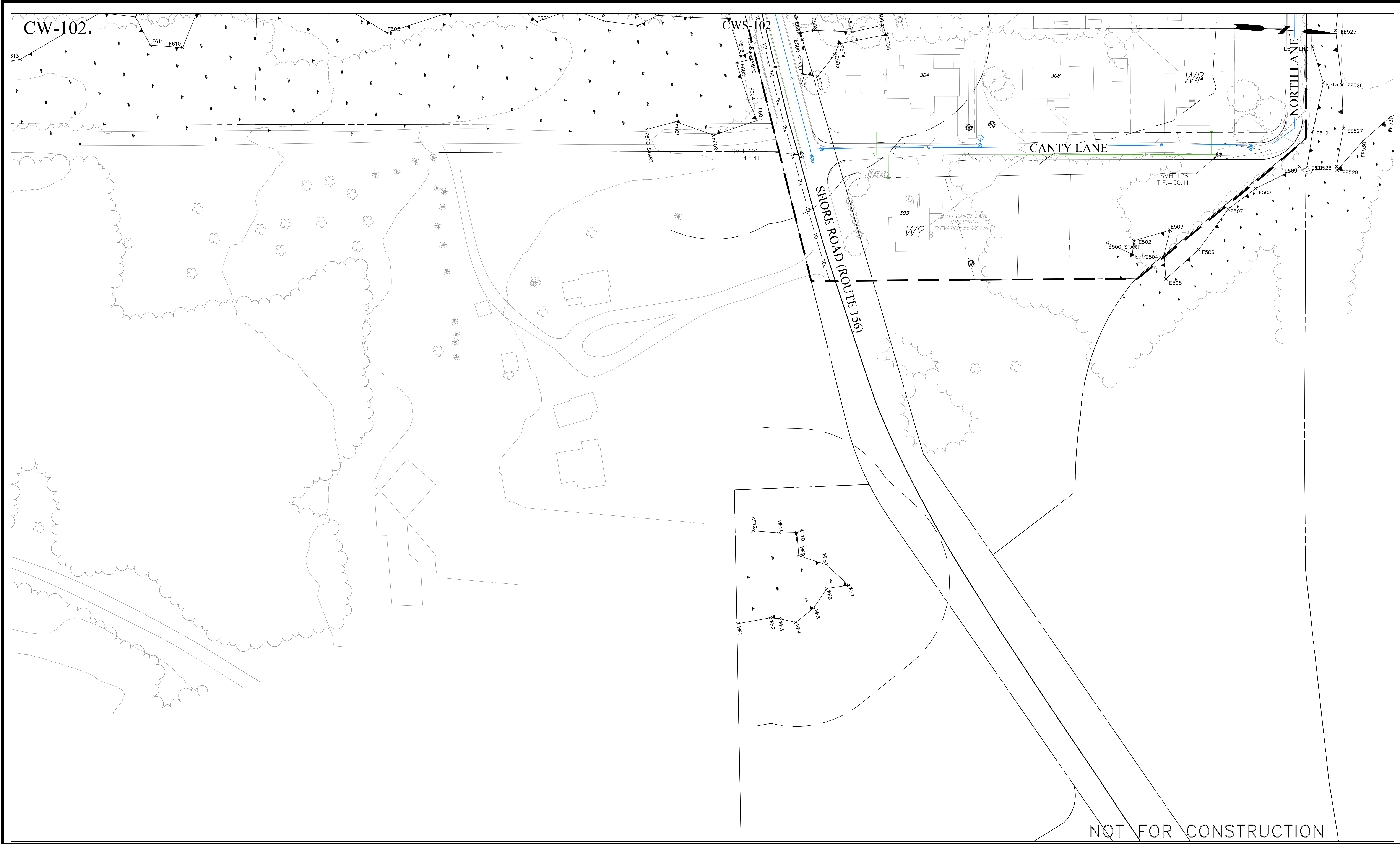
GRAPHIC SCALE

FUSS & O'NEILL
 146 HARTFORD ROAD
 MANCHESTER, CONNECTICUT 06040
 860.646.2469
 www.fando.com

OLSBA NEW WATER SERVICE CONNECTION PLAN
 LAYOUT PLAN
 OLD LYME SHORES BEACH ASSOCIATION
 OLD LYME CONNECTICUT

PROJ. No.: 20101210.B10
 DATE: APRIL 2021
CW-102

File Path: J:\DWG\20101210B10_01\SBAs Design\Civil\Plan\20101210B10_WTR01_CWC_STP.dwg Layout: CW-103 Plotted: Fri, April 02, 2021 - 10:53 AM User: sleamy
 MS VIEW: Plotter: AUTOCAD PDF (GENERAL DOCUMENTATION) PC3 CTB File: FO.STB



NOT FOR CONSTRUCTION

No.	DATE	DESCRIPTION	DESIGNER	REVIEWER
1.				

LEGEND		LEGEND	
	PROPOSED SEWER MANHOLE		NEW WATER SERVICE / ABANDON WELL
	PROPOSED SEWER LINE		NEW WATER SERVICE / KEEP WELL
	PROPOSED SEWER LATERAL		EXISTING WELL
	EXISTING WATER MAIN		EXISTING WELL TO BE ABANDON
	EXISTING WATER SERVICE		

SCALE:
 HORZ.: 1"=40'
 VERT.: NTS

DATUM:
 HORZ.: NAD83
 VERT.: NAVD88

GRAPHIC SCALE

FUSS & O'NEILL
 146 HARTFORD ROAD
 MANCHESTER, CONNECTICUT 06040
 860.646.2469
 www.fando.com

OLSBA NEW WATER SERVICE CONNECTION PLAN

LAYOUT PLAN

OLD LYME SHORES BEACH ASSOCIATION

OLD LYME CONNECTICUT

PROJ. No.: 20101210.B10
 DATE: APRIL 2021

CW-103

File Path: J:\DWG\20101210B10_01.SBA Design\Civil\Plan\20101210B10_WTR01_CWC_DET.dwg Layout: CD-101 Plotted: Fri, April 02, 2021 - 10:53 AM User: sleamy
MS VIEW: PLOTTER: AUTOCAD PDF (GENERAL DOCUMENTATION) PC3 CTB File: FO.STB

**WATERMAIN INSTALLATION
DETAIL
TYPICAL TRENCH &
PAYMENT LIMITS**

Scale: NTS
Drawing Number: SD-1
BU Number - Sheet 1 of 1

**WATERMAIN INSTALLATION
DETAIL (MULTIPLE MAINS)
TYPICAL TRENCH &
PAYMENT LIMITS**

Scale: NTS
Drawing Number: SD-1A
BU Number - Sheet 1 of 1

**THRUST BLOCK
DETAILS**

Scale: NTS
Drawing Number: SD-2
BU Number - X Sheet 1 of 1

**STANDARD METER PIT
INSTALLATION
FOR
1" METER**

Scale: NTS
Drawing Number: SMS-3A
BU Number - Sheet of

**SEPARATION FROM
STORM AND SEWER LINES
DETAIL**

Scale: NTS
Drawing Number: SD-22
BU Number - Sheet 1 of 1

**WATER SERVICE
ELECTRICAL
BONDING PROCEDURE**

Scale: NTS
Drawing Number: SD-23
BU Number - Sheet 1 of 1

NOT FOR CONSTRUCTION

No.	DATE	DESCRIPTION	DESIGNER	REVIEWER
1.			SAL	MEG

SEAL

SEAL

SCALE:

HORIZ.: NTS
VERT.: NTS

DATUM:

HORIZ.:
VERT.:

GRAPHIC SCALE

FUSS & O'NEILL

146 HARTFORD ROAD
MANCHESTER, CONNECTICUT 06040
860.646.2469
www.fando.com

OLSB A WATER MAIN REPLACEMENT

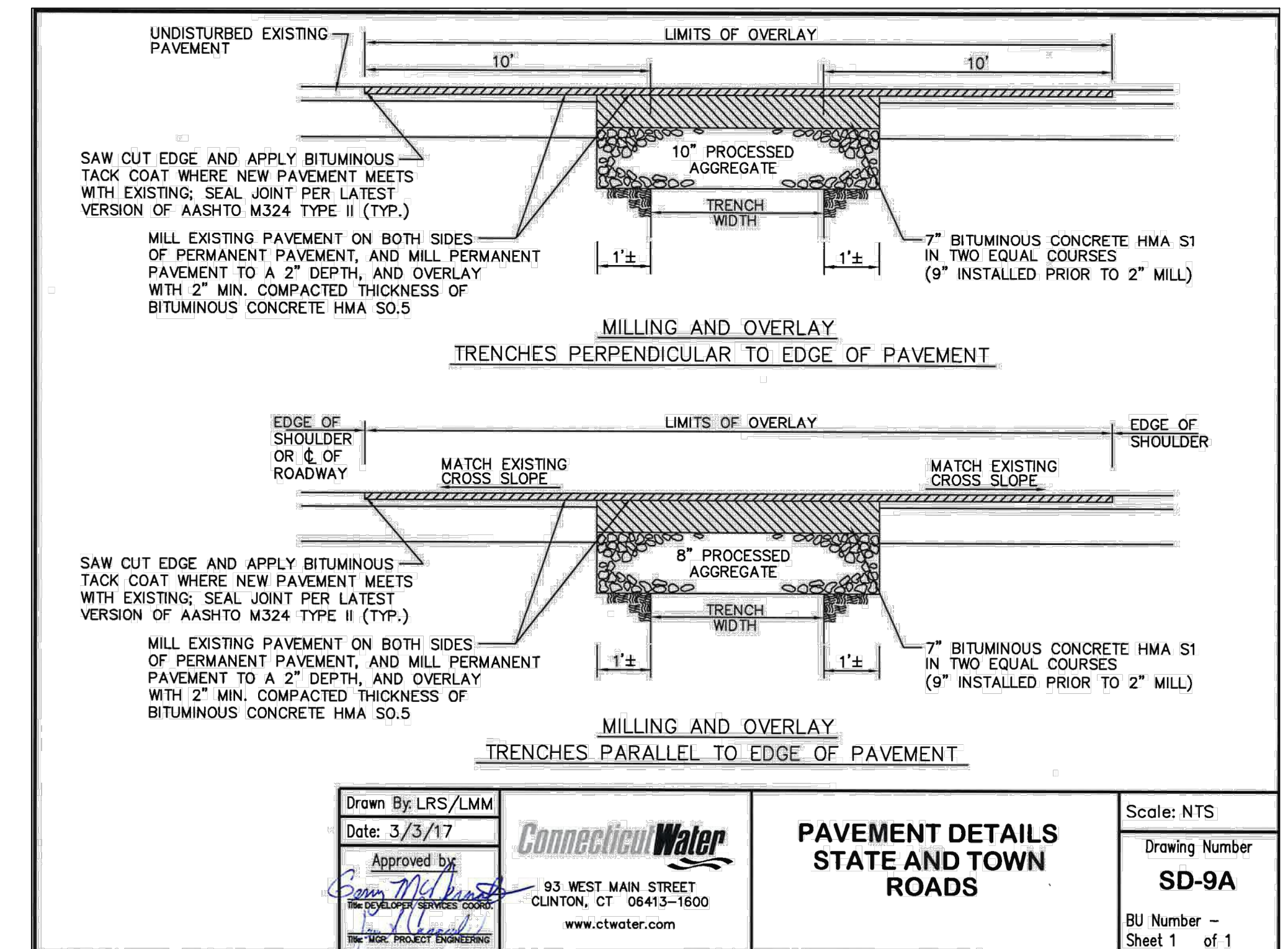
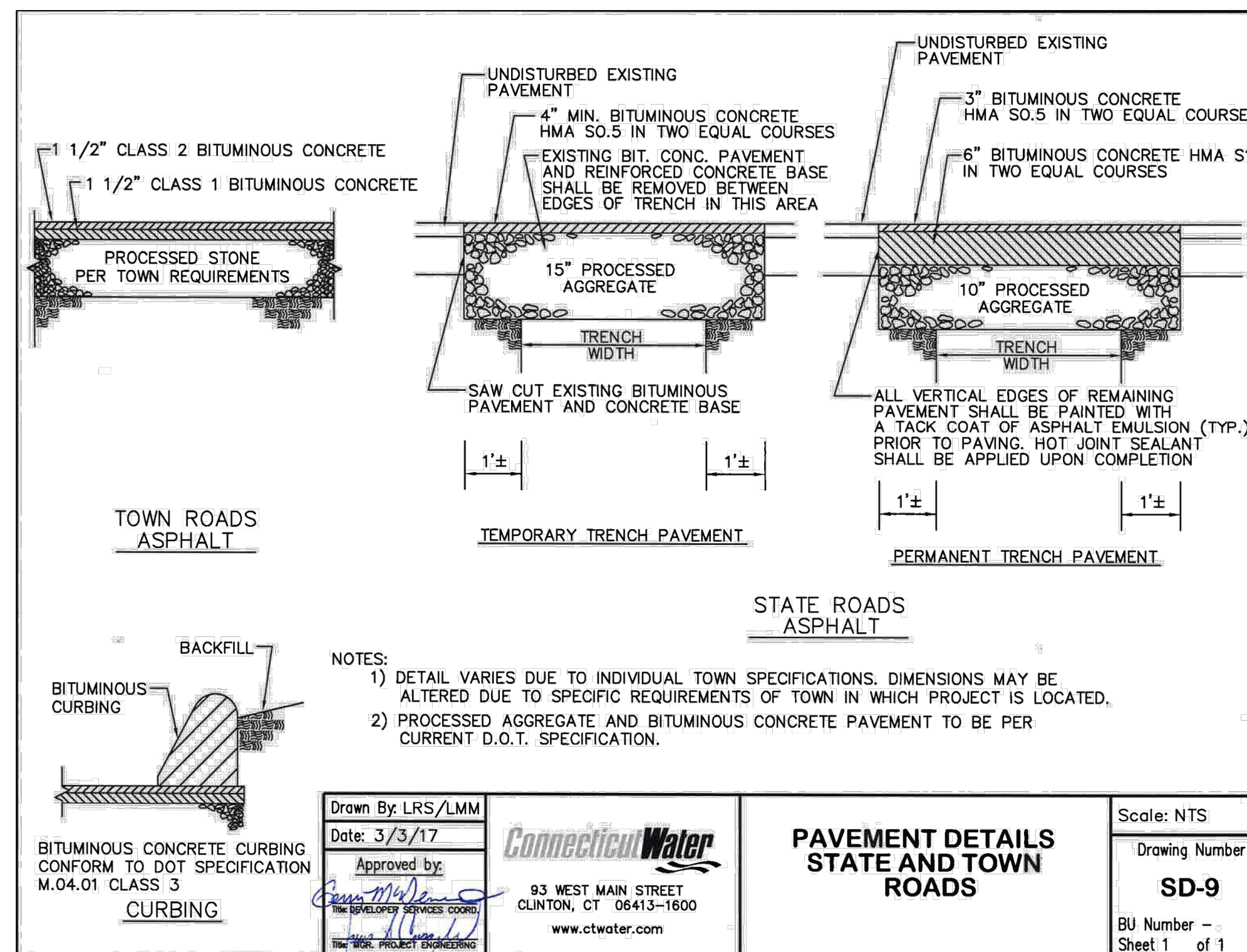
CT WATER STANDARD DETAILS

OLD LYME CONNECTICUT

PROJ. No.: 20101210_B10
DATE: JANUARY 2020

CD-101

File Path: J:\DWG\20101210B10_01_SBA Design\Civil\Plan\20101210B10_WTR01_CWC_DET.dwg Layout: CD-102 Plotted: Fri, April 02, 2021 - 10:53 AM User: aleamy
 PLOTTER: AUTOCAD PDF (GENERAL DOCUMENTATION) PC3 CTB File: FO.STB
 LAYER STATE:

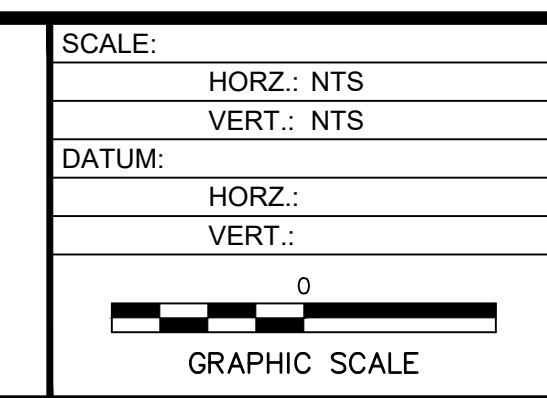


NOT FOR CONSTRUCTION

No.	DATE	DESCRIPTION	DESIGNER	REVIEWER
1.			SAL	MEG

SEAL

SEAL



FUSS & O'NEILL

146 HARTFORD ROAD
 MANCHESTER, CONNECTICUT 06040
 860.646.2469
 www.fandco.com

OLSBA WATER MAIN REPLACEMENT

CT WATER STANDARD DETAILS

OLD LYME CONNECTICUT

PROJ. No.: 20101210_B10
 DATE: JANUARY 2020

CD-102